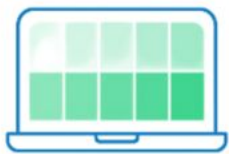


SUPPORT IS PROVIDED BY

susan crown  
exchange



**Demystifying Systemic  
Social and Emotional  
Learning** | Webinar Series

HOSTED BY  CASEL

**Adult SEL**







CLASSROOM		Explicit SEL instruction	
		SEL integrated with academic instruction	
SCHOOL		Youth voice and engagement	
		Supportive school and classroom climates	
		Focus on adult SEL	
		Supportive discipline	
		A continuum of integrated supports	
FAMILY		Authentic family partnerships	
	COMMUNITY		Aligned community partnerships
			Systems for continuous improvement



@caselorg





# What comes to mind when you hear: Adult SEL?



@caselorg

*made possible with support from*



# Focus on Adult SEL



@caselorg

made possible with support from

susan crown  
exchange



# Adult SEL Competencies and Capacity

## LEARN

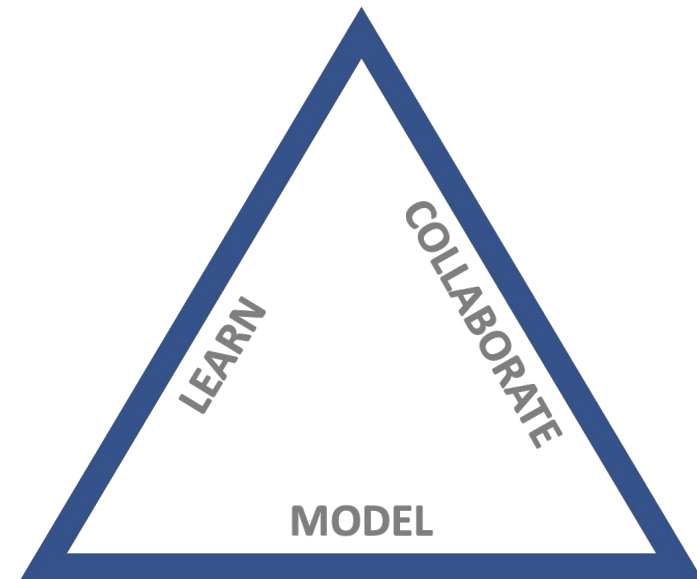
Strengthen staff professional skills and social, emotional and cultural competence

## COLLABORATE

Create structures that foster trust and collaboration

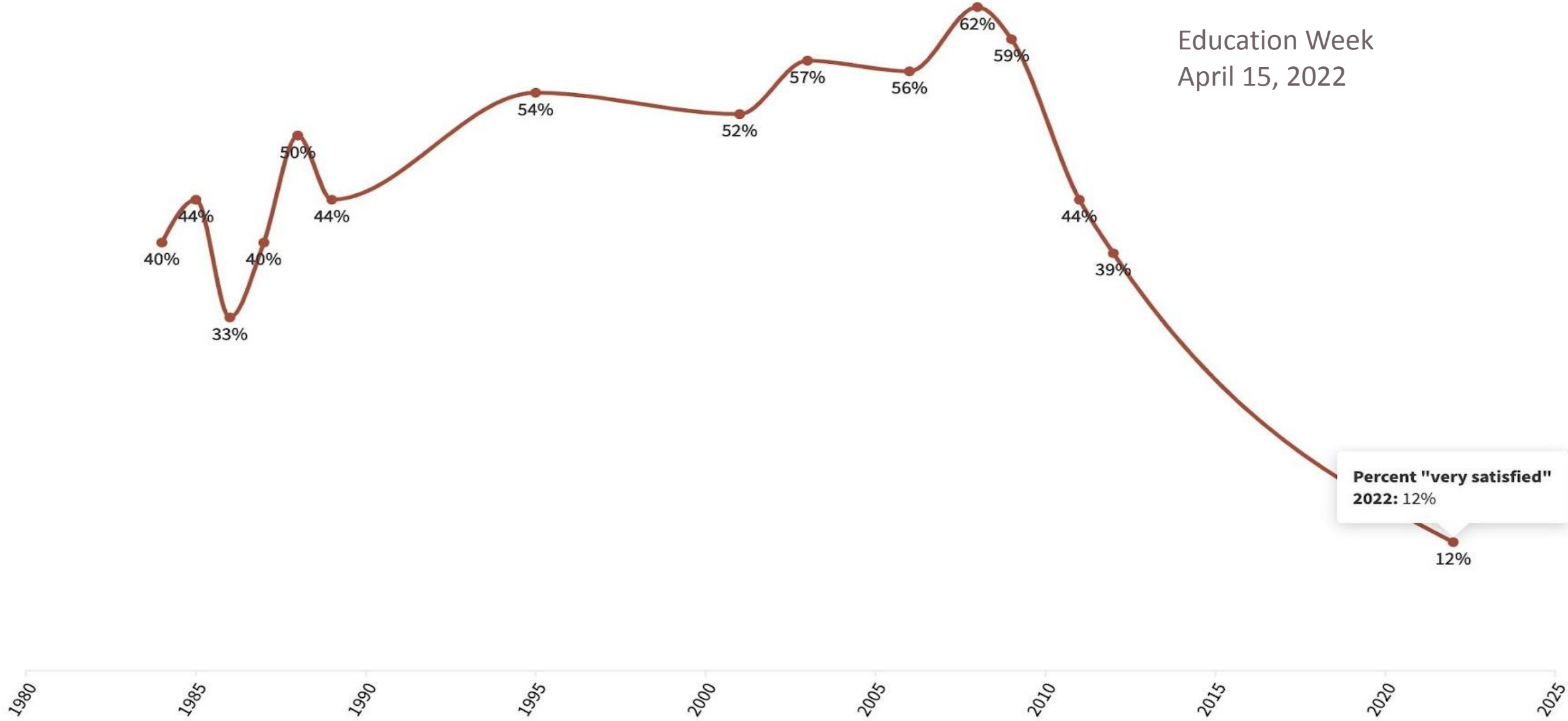
## and MODEL

All staff model SEL competencies and mindsets



# Percentage of K-12 teachers who say they are 'very satisfied' with their jobs

Education Week  
April 15, 2022

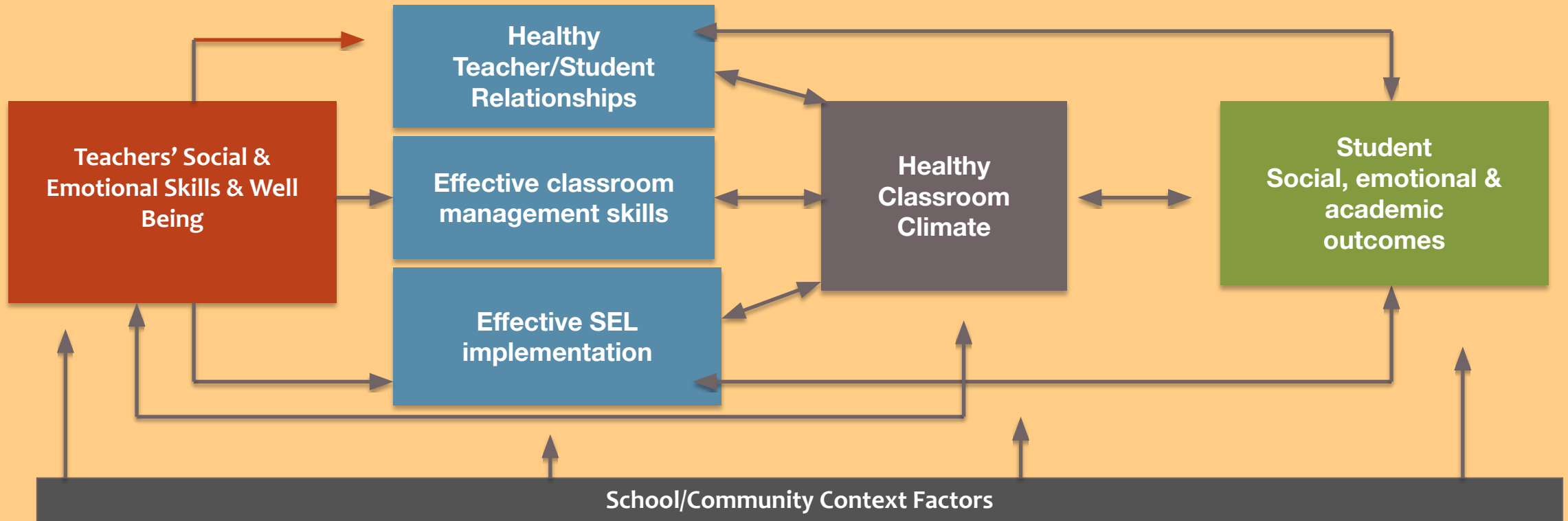


**Percent "very satisfied"**  
2022: 12%

SOURCE: 2022 results are from Merrimack College and EdWeek Research Center. 1984-2012 results are from the MetLife Survey of the American Teacher.

# The Prosocial Classroom:

A Model of Teacher Social and Emotional Competence and Classroom and Child Outcomes



Jennings & Greenberg, 2009

# Rationales to Support Adult SEL

What do schools gain from having educators who are resilient, involved and flourishing in their jobs?

## **Proven**

- Teachers with greater well-being
- Teachers who show better instructional practices
- Students who show less disruptive behavior and better attention
- Students who feel included and valued at school

## **Hypothesized – not sufficient data**

- District savings re teacher turnover costs\*
- District saving re teacher physical and mental health costs\*
- Lower rates of teacher absenteeism and lower rate of presenteeism\*
- Greater teacher stability which means greater community stability\*



# Key Takeaways

**Research demonstrates that teachers with strong social and emotional skills have better instructional practices and relationships with students.** There is more to learn on effective approaches to developing adult SEL and the impact on the broader school/district community.



@caselorg

*made possible with support from*

susan crown  
exchange

# Key Takeaways

**SEL is about lifelong learning into adulthood**, and adult SEL goes beyond teachers to the whole community of adults and young people.



@caselorg

*made possible with support from*

susan crown  
exchange

# Key Takeaways

**When developing policy solutions** to support the learning and development of students, it is important to create structures and opportunities that attend to adults' own learning and environments.



@caselorg

*made possible with support from*

susan crown  
exchange