



# Learning From Student Perspectives

featuring YouthTruth - The Center for Effective  
Philanthropy and North Clackamas School District



MADE POSSIBLE WITH SUPPORT FROM



# Webinar Tips



**Close all programs & browsers to maximize bandwidth**



**Exit & re-enter the webinar if you experience a lag**



**Use the Questions feature for technical assistance**



**The recording, slides, resources, certificate will be sent by email**

# Learning from Student Perspectives

**Justina Schlund**

*Senior Director of Content and Field Learning, CASEL*



@caselorg

*made possible with support from*





YOUTH TRUTH

STUDENT SURVEY

A NATIONAL NONPROFIT

LEARNING FROM STUDENT PERSPECTIVES

## Listening to Learn through a Pandemic

CASEL Webinar

April 23, 2021

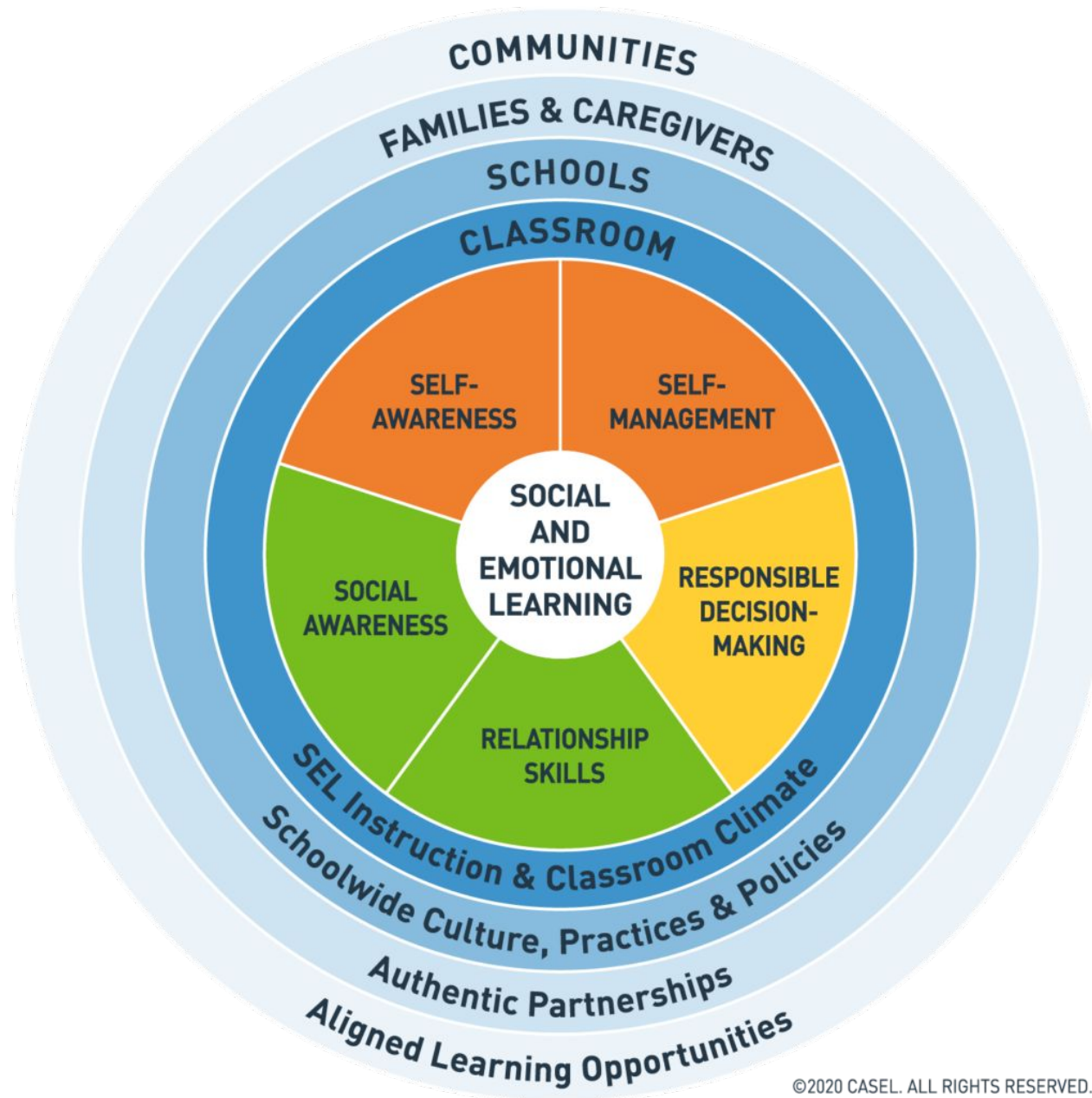
Dr. Jen de Forest & Jimmy Simpson Jr., Partnerships, YouthTruth - The Center for Effective Philanthropy  
Dr. Shelly Reggiani, Director of Equity and Instructional Services, North Clackamas School District

# Today's Agenda

- Our Framework
- Why do we listen?
- Who did we hear from?
- YouthTruth's Six Areas of Insight
- Closing + Two Commitments

# A Framework for student perception data

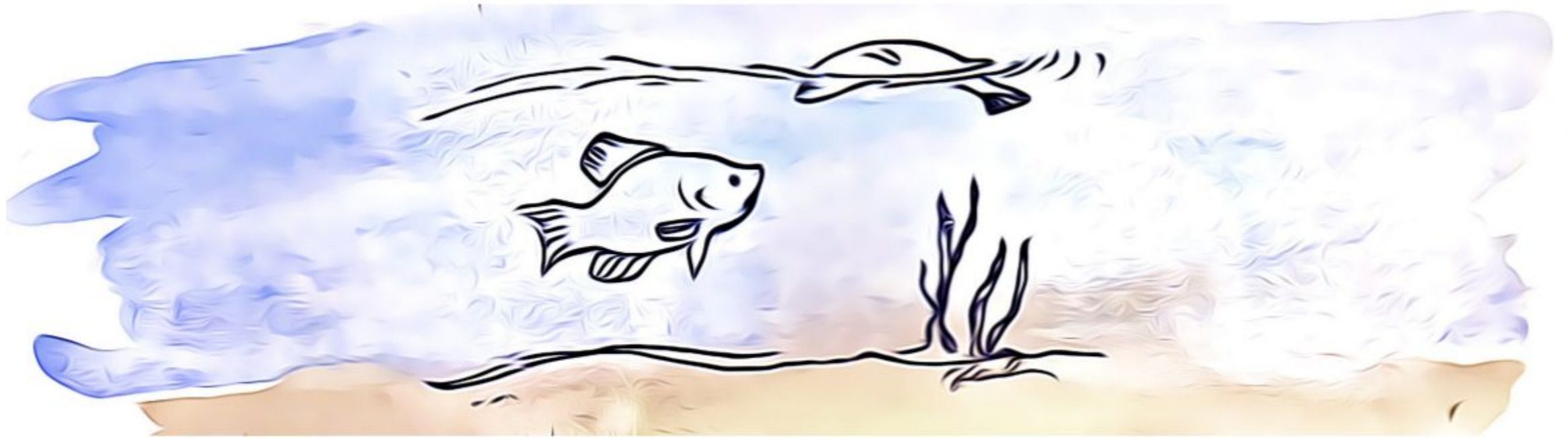
## SEL + EQUITY



©2020 CASEL. ALL RIGHTS RESERVED.

# THE GROUNDWATER APPROACH:

building a practical understanding  
of structural racism

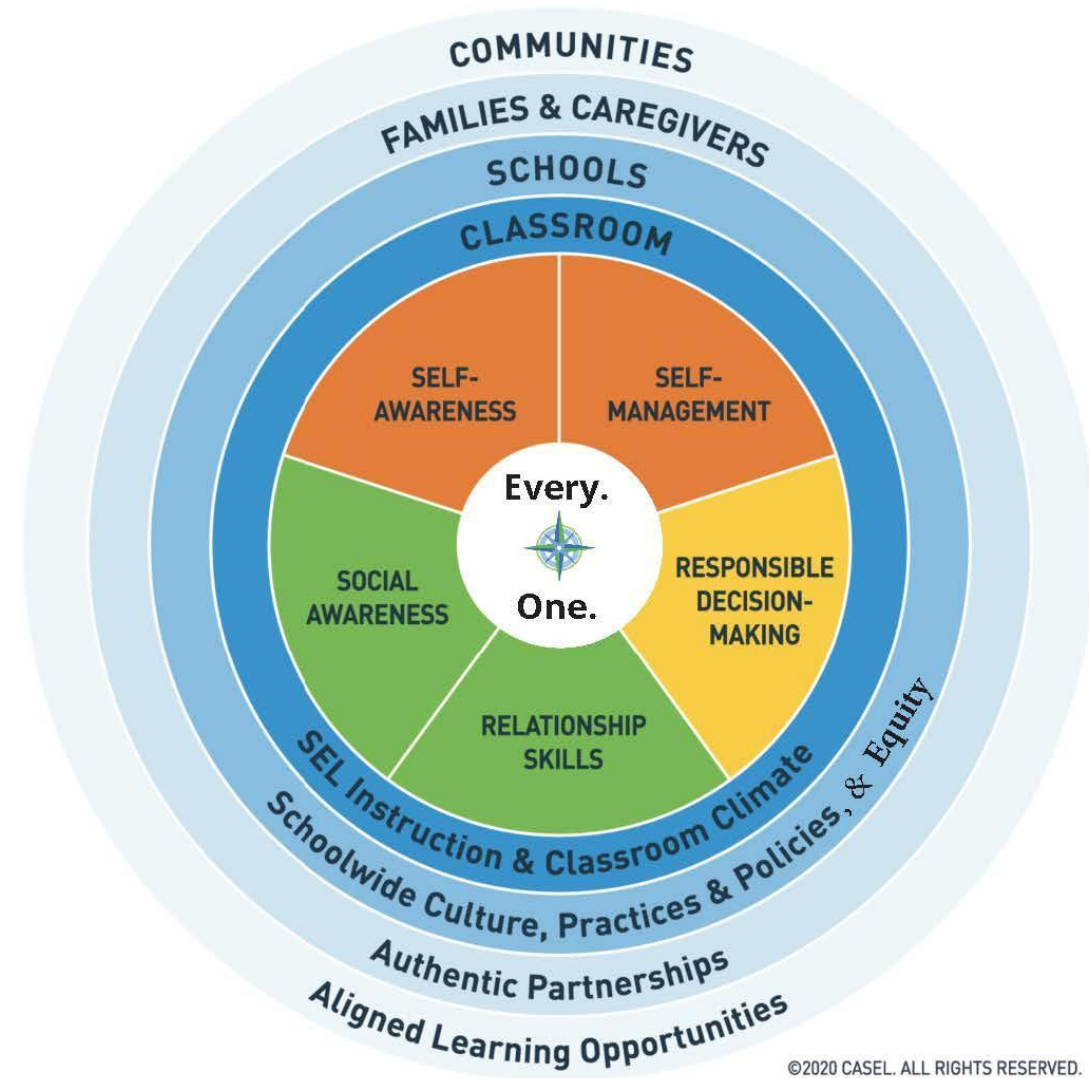


Artwork by Jojo Karlin (jojokarlin.com)

# SEL+ Equity: THE NC APPROACH

The North Clackamas School District is committed to equity and the success of each student. Equity fosters an inclusive and barrier-free environment where each student will have access to a high-quality education and can follow their own path in reaching their full potential.

As a North Clackamas community we embrace and affirm the identity of each student inclusive of race, ethnicity, family economics, mobility, language, marital status, gender, sexual orientation, gender identity, disability, initial proficiencies, and religion.



# Why surveys?



- Engagement
- Academic Challenge
- Culture
- Belonging & Peer Collaboration
- Relationships with Teachers



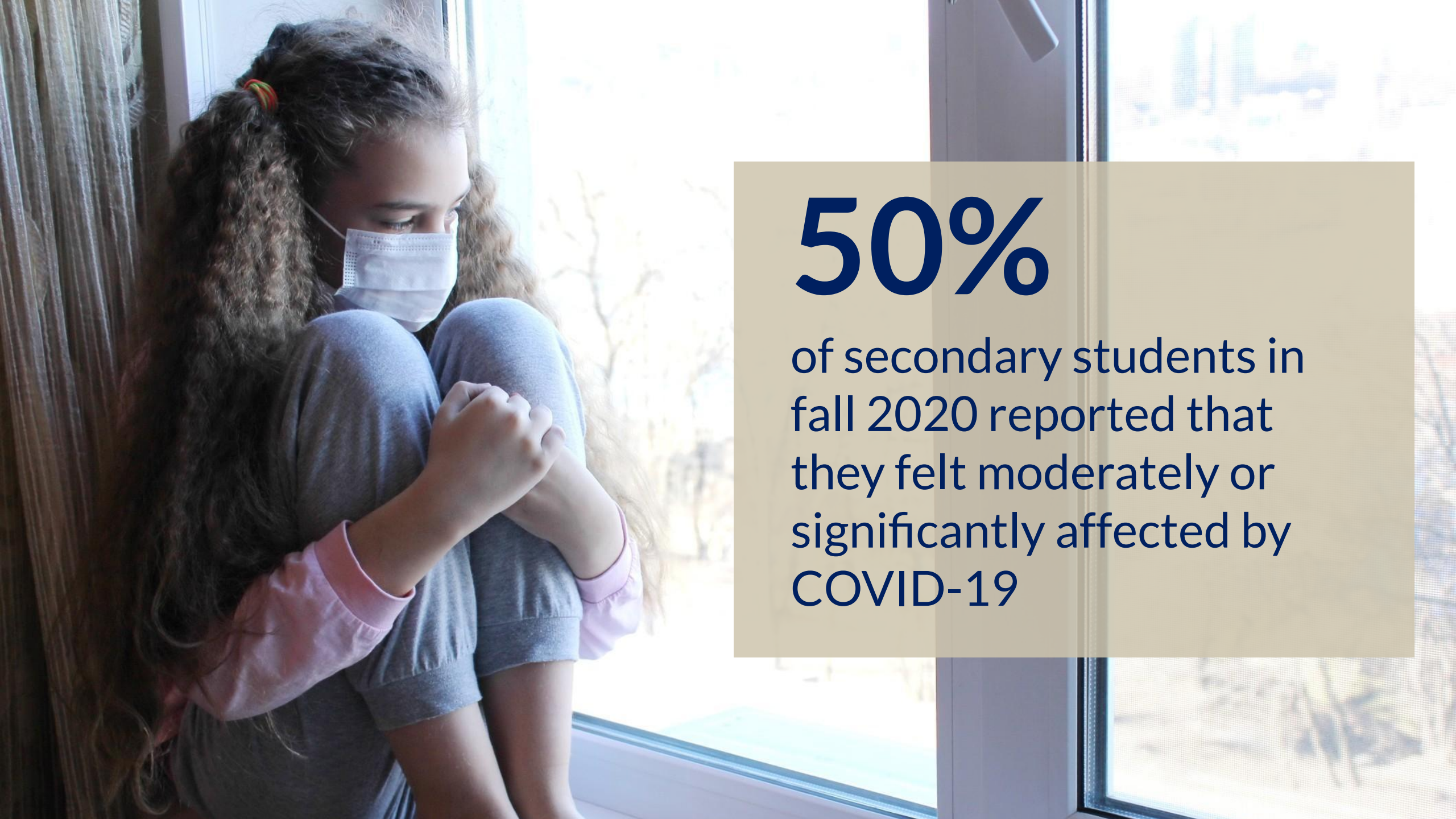
# 6 Areas of Insight

THE COVID EFFECT  
EXPERIENCE OF LEARNING  
OBSTACLES TO VIRTUAL LEARNING  
RELATIONSHIPS WITH TEACHERS  
CONNECTION  
POST SECONDARY PLANS

---

# 1 THE COVID EFFECT

---



**50%**

of secondary students in fall 2020 reported that they felt moderately or significantly affected by COVID-19

# The COVID-19 Effect





---

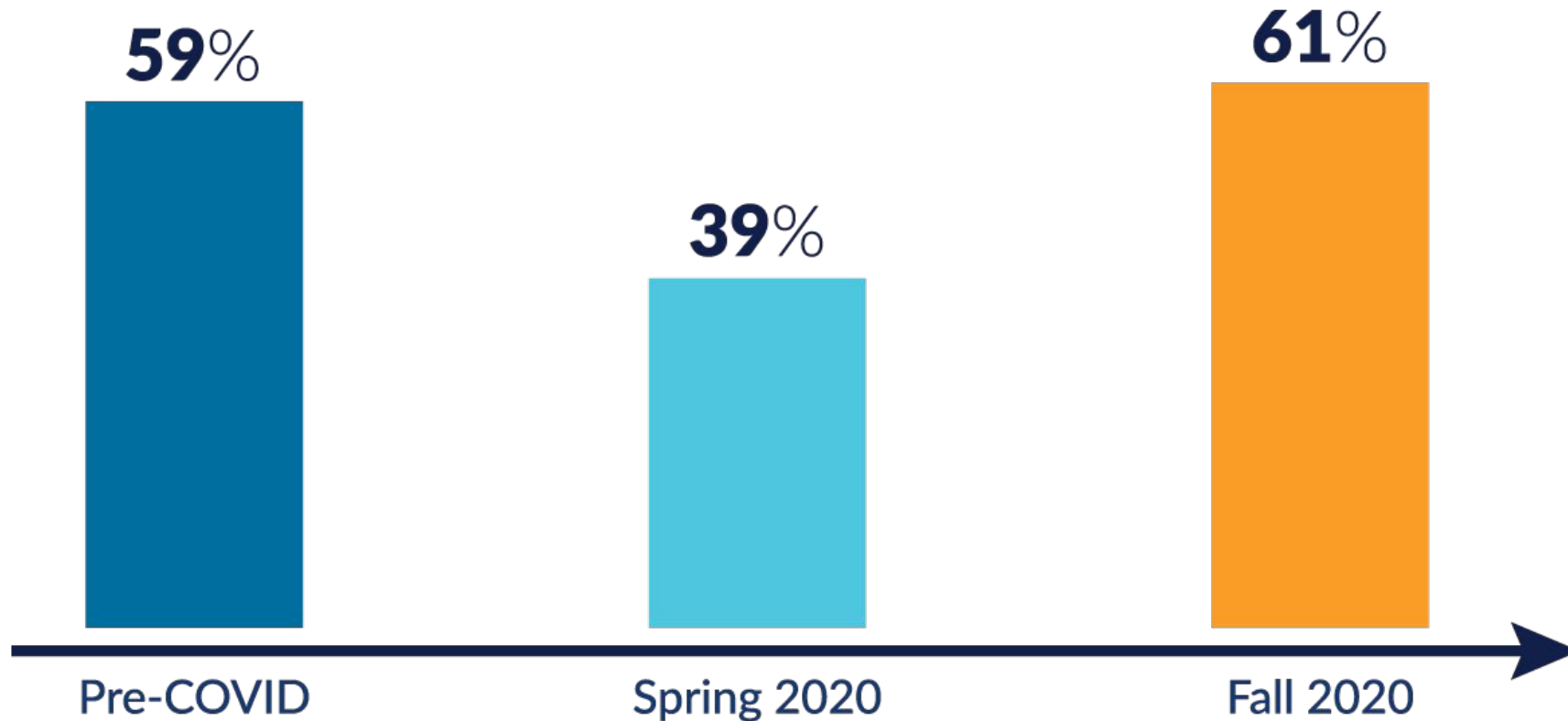
## 2 EXPERIENCE OF LEARNING

---

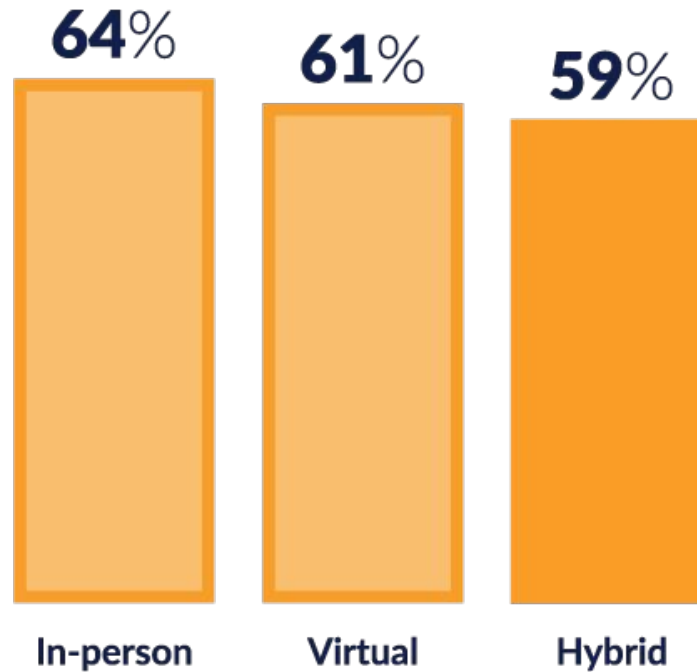
YT



*In most of my classes,  
I learn a lot almost every day.*



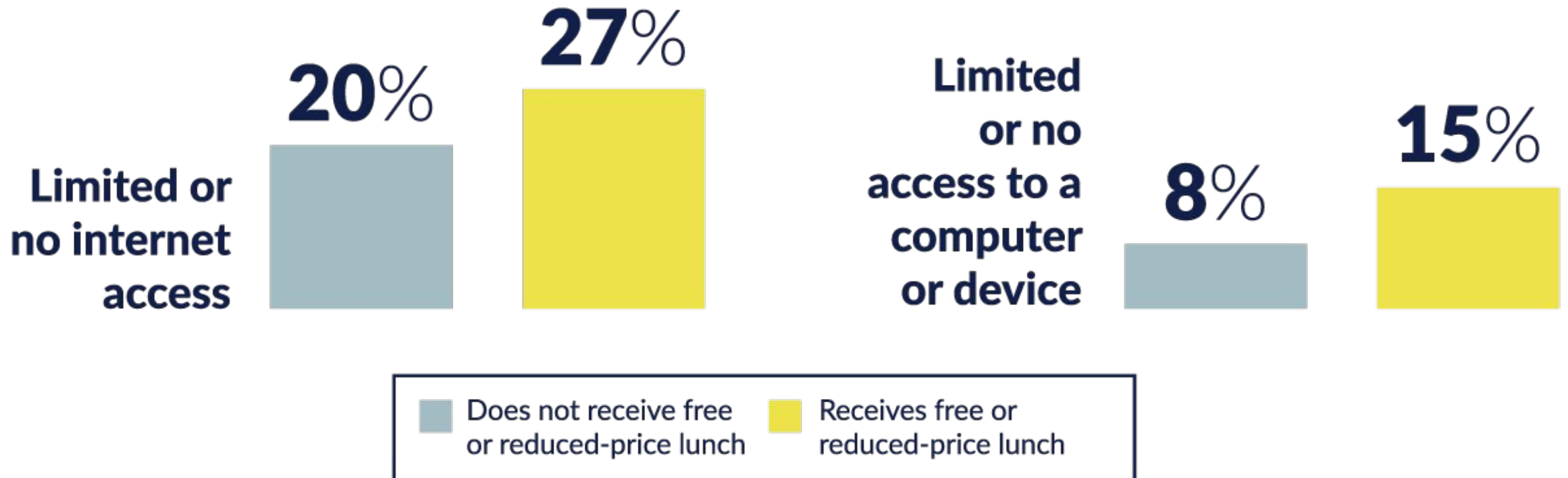
*In most of my classes,  
I learn a lot almost every day.*



**By Learning Setting**

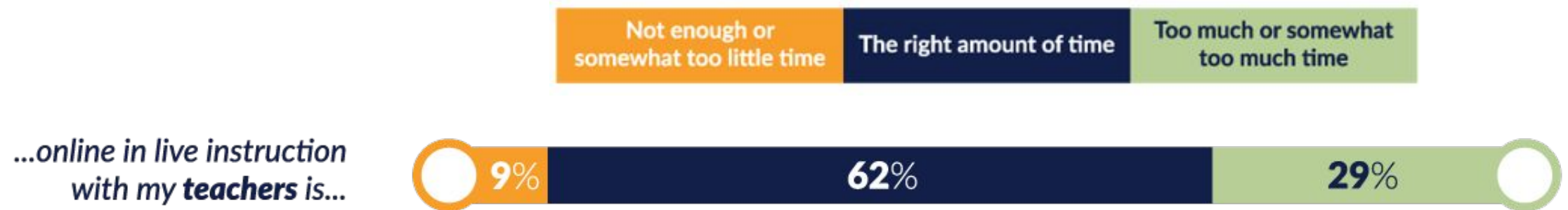
 Statistically significant difference

## Do any of the following make it hard for you to do your best in school?



# WHILE DISTANCE LEARNING

*The amount of time I spend...*



# While distance learning...

*...I can take breaks  
when I need them*

**48%**

A horizontal bar chart with a dark blue segment on the left representing 48% and a light grey segment on the right representing the remaining 52%.

*...someone usually notices  
if I'm not paying attention*

**35%**

A horizontal bar chart with a dark blue segment on the left representing 35% and a light grey segment on the right representing the remaining 65%.



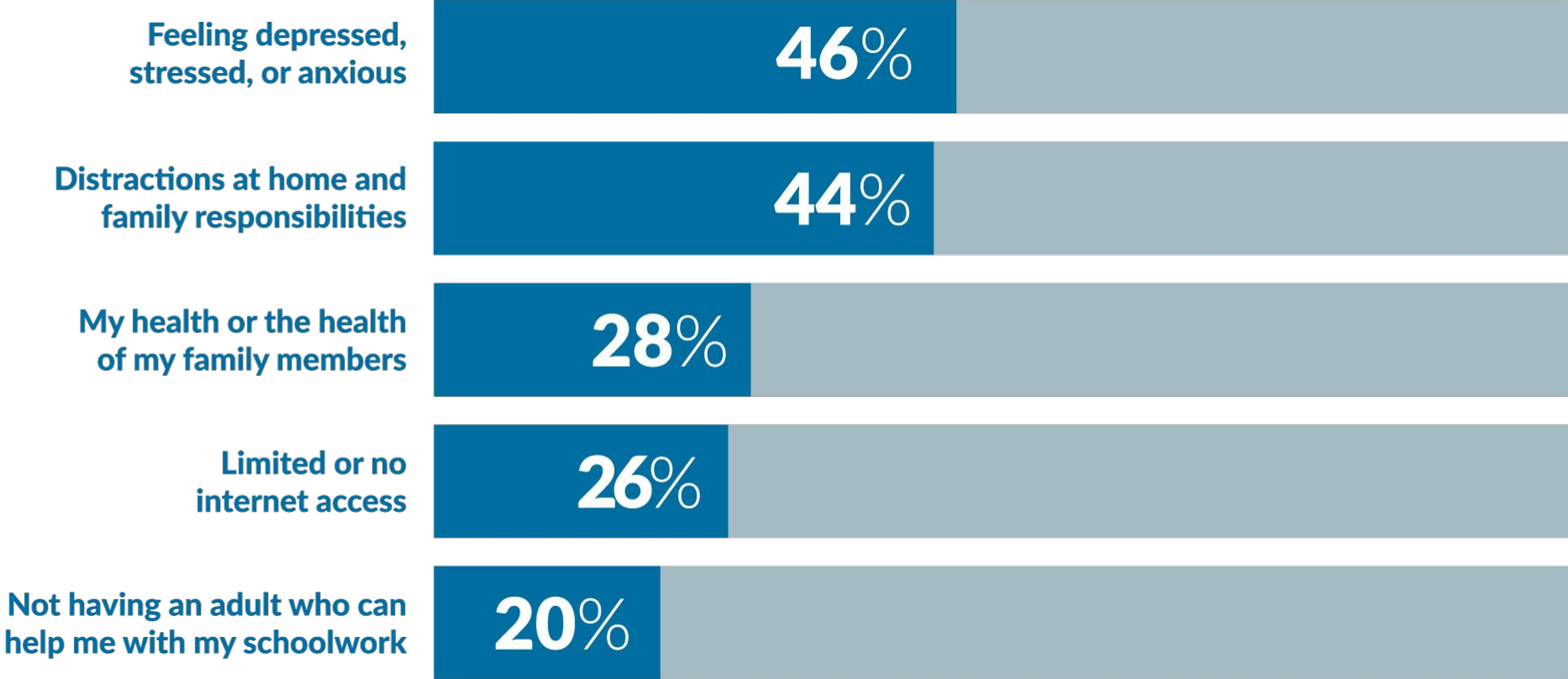
---

# 3 OBSTACLES TO VIRTUAL LEARNING

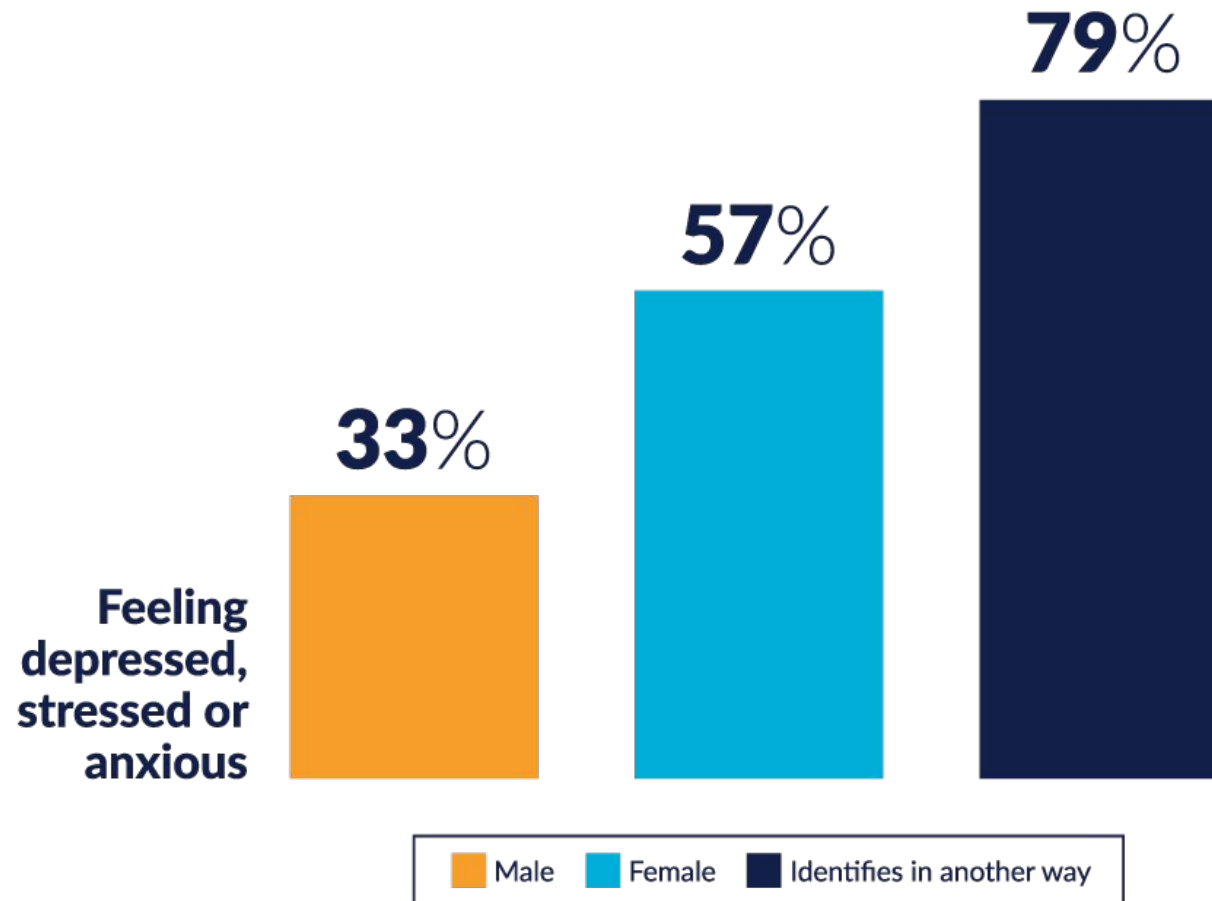
---



# TOP 5 OBSTACLES TO VIRTUAL LEARNING

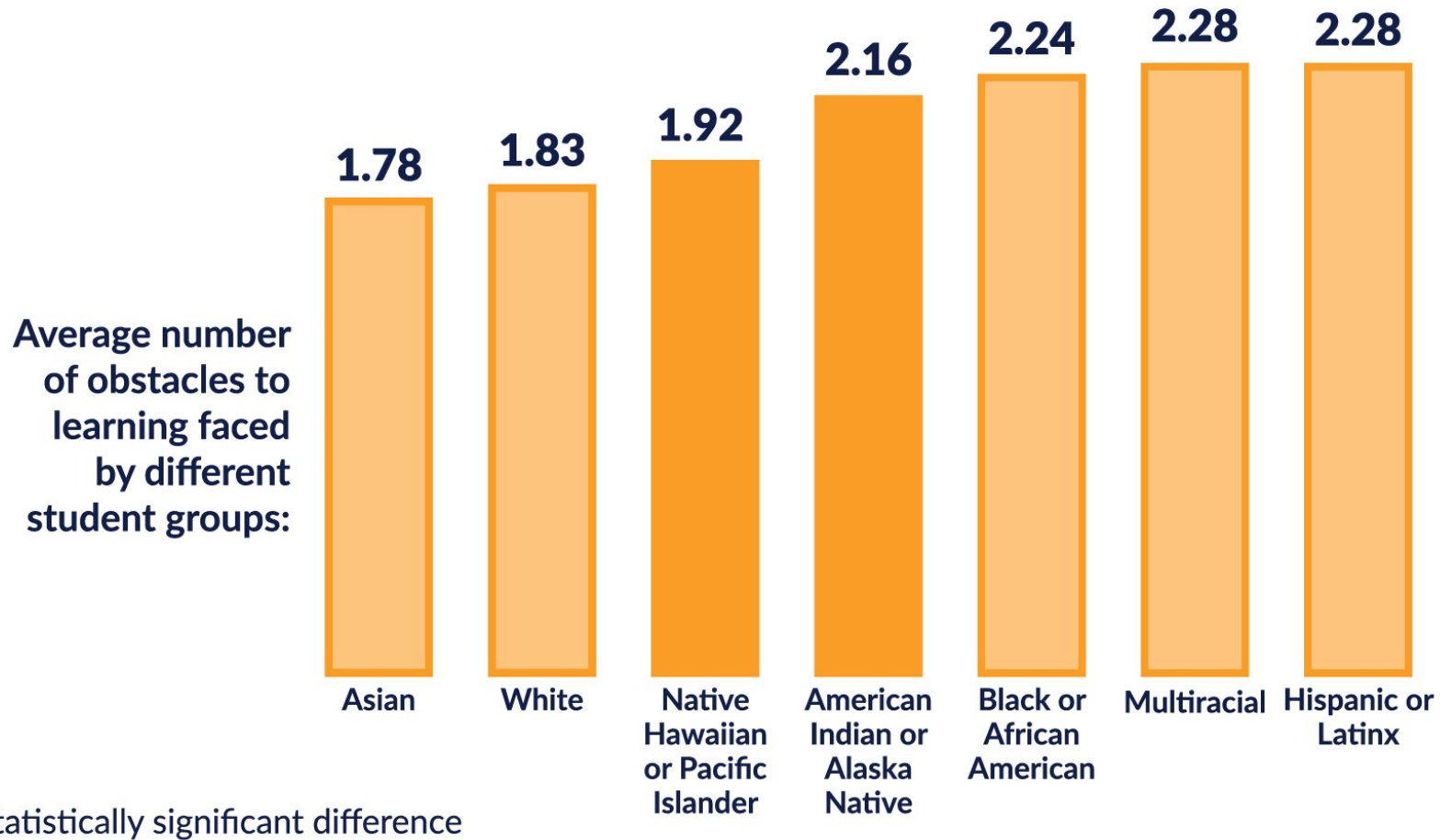


# Do any of the following make it hard for you to do your best in school?



*Mental health is the new # 1 obstacle to learning;  
however, not for all students.*

# OBSTACLE LOAD BY RACE/ETHNICITY



# TOP 3 OBSTACLES TO VIRTUAL LEARNING

## All Students

Feeling depressed, stressed, or anxious

Distractions at home and family responsibilities

My health or the health of my family members

## Hispanic/Latinx Students

Distractions at home and family responsibilities

Feeling depressed, stressed, or anxious

My health or the health of my family members

## Black or African-American Students

Distractions at home and family responsibilities

Feeling depressed, stressed, or anxious

Limited or no internet access





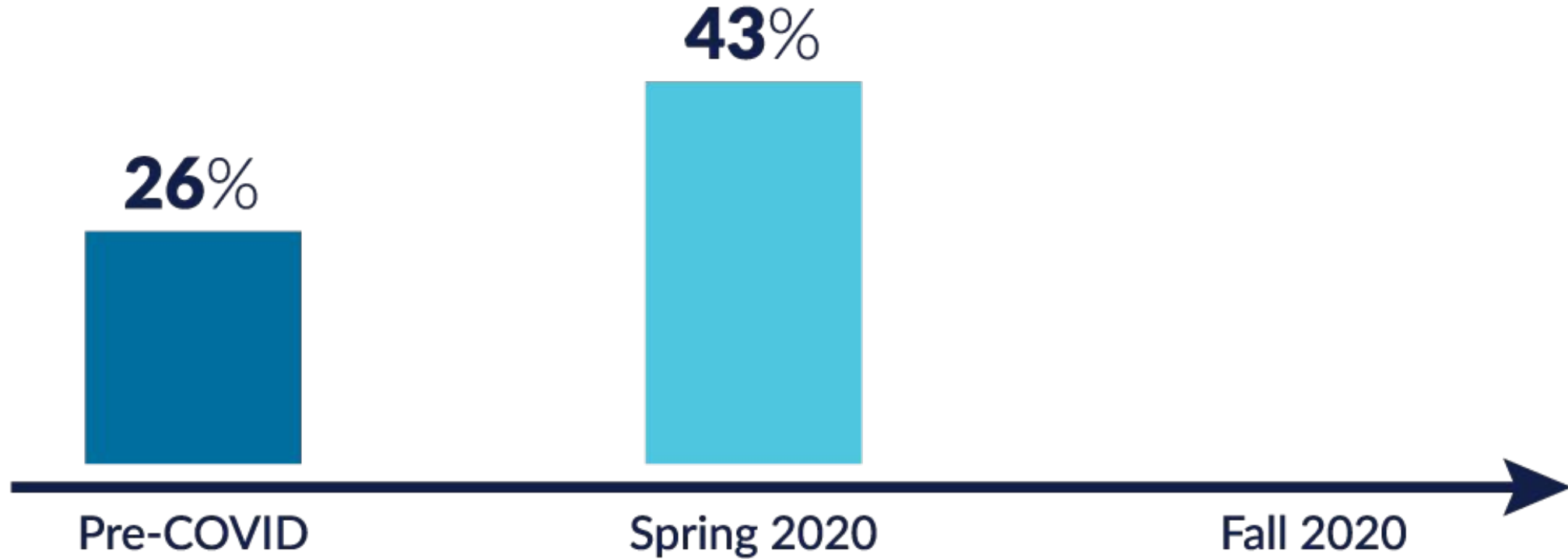
---

# 4 RELATIONSHIPS WITH TEACHERS

---



*Most of my teachers try to understand what my life is like outside of school.*



*Most of my teachers try to understand what my life is like outside of school.*







---

# 5 CONNECTION

---

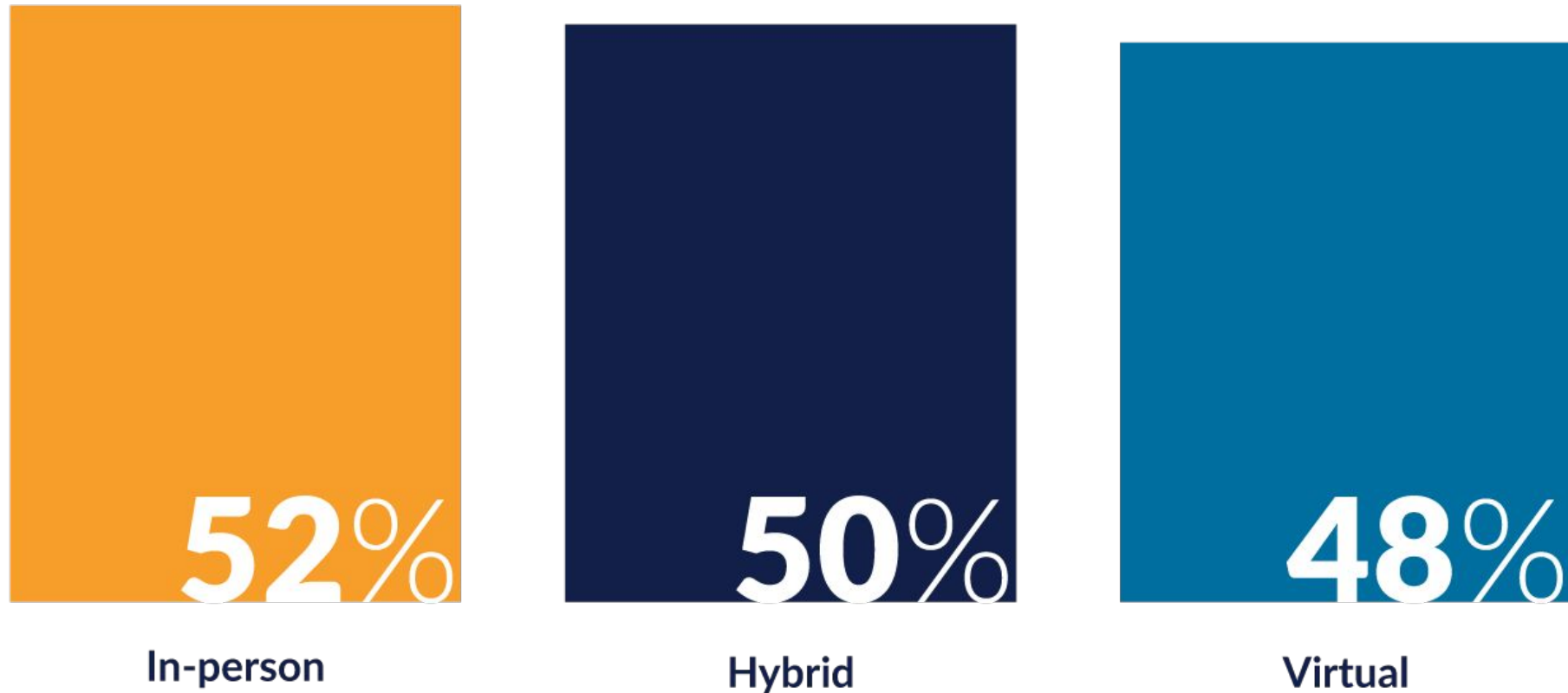
YT



*I really feel like part of my school's community.*

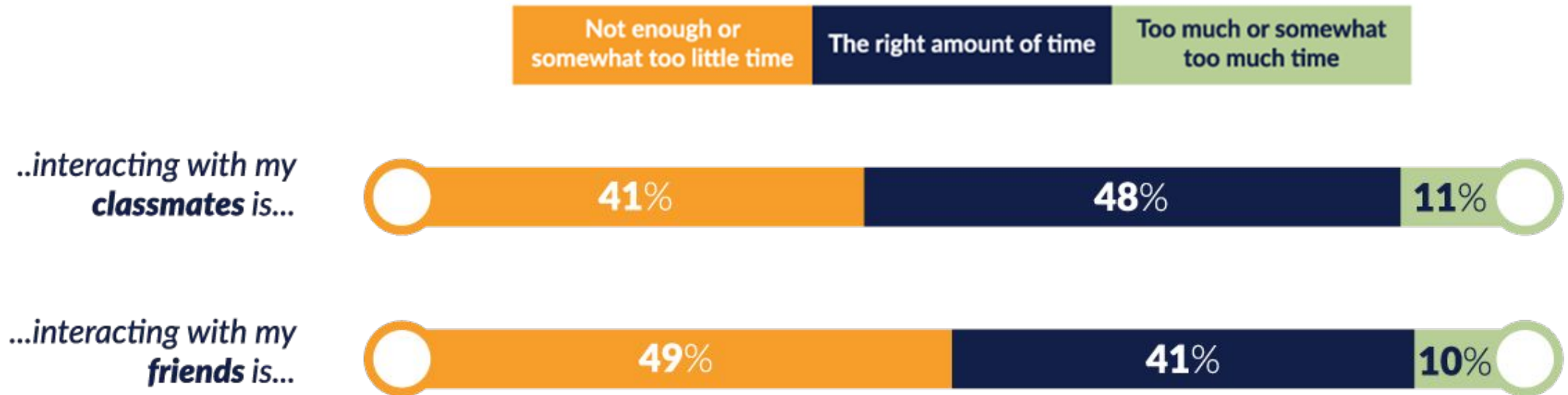


*I really feel like part of my school's community.*



# SOCIAL INTERACTION WHILE DISTANCE LEARNING

*The amount of time I spend...*







---

# 6 POST SECONDARY PLANS

---

YT

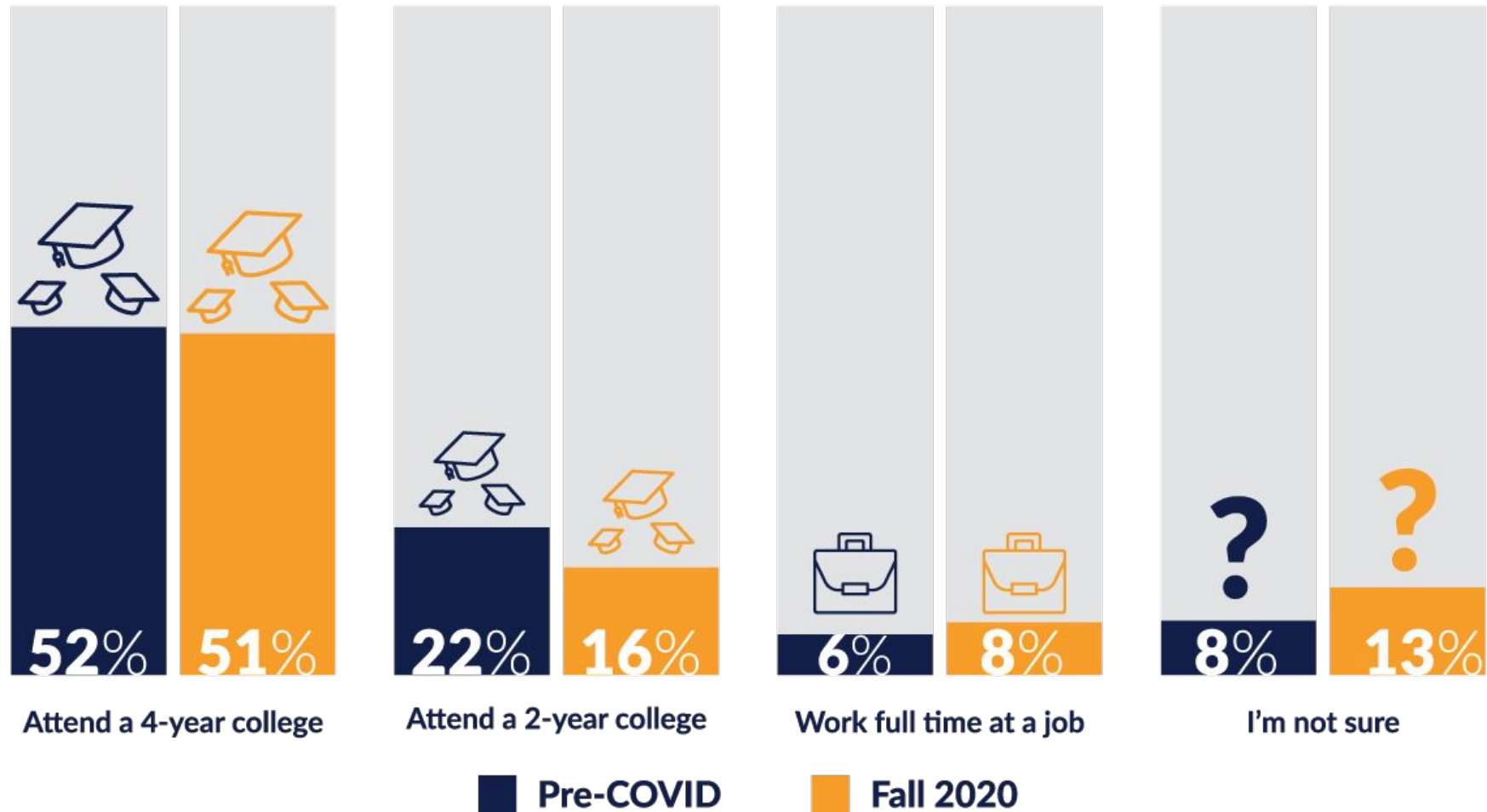


# 1 in 4 high school seniors' postsecondary plans have changed since the start of the COVID-19 pandemic



# SENIORS' POSTSECONDARY PLANS

After you finish high school, what do you expect to do next?





# THE GROUNDWATER APPROACH:

building a practical understanding of structural racism



Artwork by Jojo Karlin (jojokarlin.com)

# One Commitment

*How will you listen to your students?*

# YouthTruth

— STUDENT SURVEY —

A NATIONAL NONPROFIT

Dr. Jennifer de Forest  
[jend@youthtruthsurvey.org](mailto:jend@youthtruthsurvey.org)

Jimmy Simpson Jr.  
[jimmys@youthtruthsurvey.org](mailto:jimmys@youthtruthsurvey.org)



Dr. Shelly Reggiani  
[reggianis@nclack.k12.or.us](mailto:reggianis@nclack.k12.or.us)

Join the next CASEL webinar

Friday, May 21 | 11:00 AM ET

# American Rescue Plan Act: Funding Social and Emotional Learning



@caselorg

*made possible with support from*

susan crown  
exchange