

Demystifying Systemic Social and Emotional Learning:

Explicit Instruction



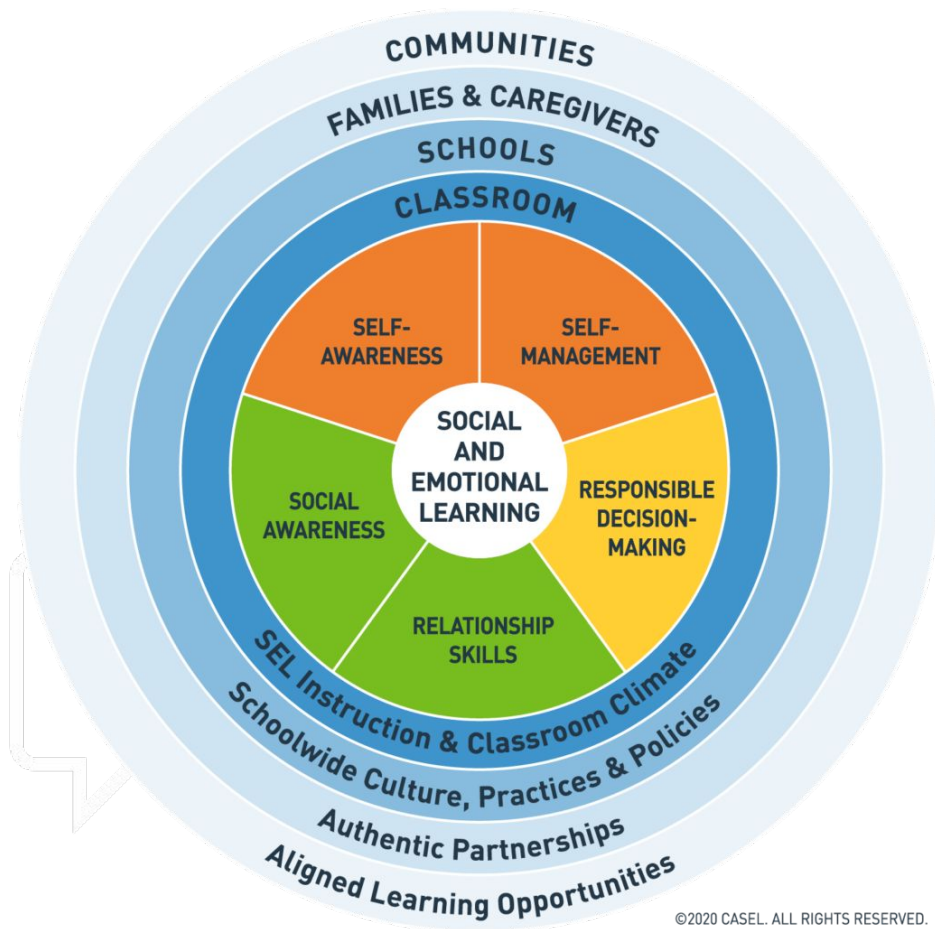
SUPPORT IS PROVIDED BY

susan crown
exchange



**Demystifying Systemic
Social and Emotional
Learning** | Webinar Series

HOSTED BY CASSEL



@caselorg

CLASSROOM		Explicit SEL instruction
		SEL integrated with academic instruction
		Youth voice and engagement
SCHOOL		Supportive school and classroom climates
		Focus on adult SEL
		Supportive discipline
FAMILY		A continuum of integrated supports
		Authentic family partnerships
		Aligned community partnerships
		Systems for continuous improvement
COMMUNITY		

What comes to mind when you hear: Explicit SEL instruction?



@caselorg

made possible with support from

susan crown
exchange



Explicit SEL instruction



SEL integrated with academic instruction



Youth voice and engagement



Supportive school and classroom climates



Focus on adult SEL



Supportive discipline



A continuum of integrated supports



Authentic family partnerships



Aligned community partnerships



Systems for continuous improvement

Explicit SEL instruction



Students have consistent opportunities to cultivate, practice, and reflect on social and emotional competencies in ways that are developmentally appropriate and culturally responsive.



@caselorg

made possible with support from

susan crown
exchange

Schoolwide SEL: Explicit SEL Instruction



@caselorg

made possible with support from





What does the research currently say?

Effective SEL approaches often incorporate four elements: **SAFE**

- **SEQUENCED**: Connected and coordinated activities to foster skills development
- **ACTIVE**: Employing active forms of learning to help students strengthen new skills
- **FOCUSED**: Dedicated time and attention to developing personal and social skills
- **EXPLICIT**: Targeting specific social and emotional skills



@caselorg

made possible with support from

susan crown
exchange

Key Takeaways

All students should have dedicated time to cultivate, practice, and reflect on **social and emotional competencies**

States and districts create the conditions for explicit SEL by **allocating funding and setting guidelines/standards**

Explicit SEL *implementation* should include opportunities for **measuring both implementation milestones and impact** on student outcomes



@caselorg

made possible with support from

